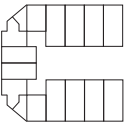


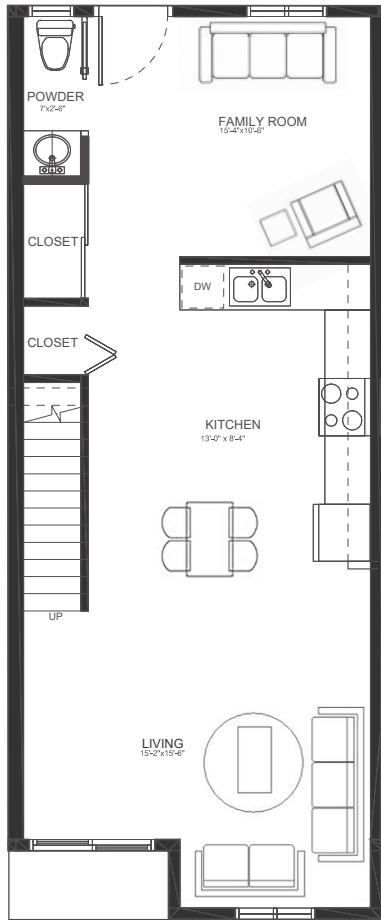
# LOT 36 UNIT 219 | LIZZY BAY | SQUAMISH, BC

3 BEDROOM, 2.5 BATH + ROOF DECK

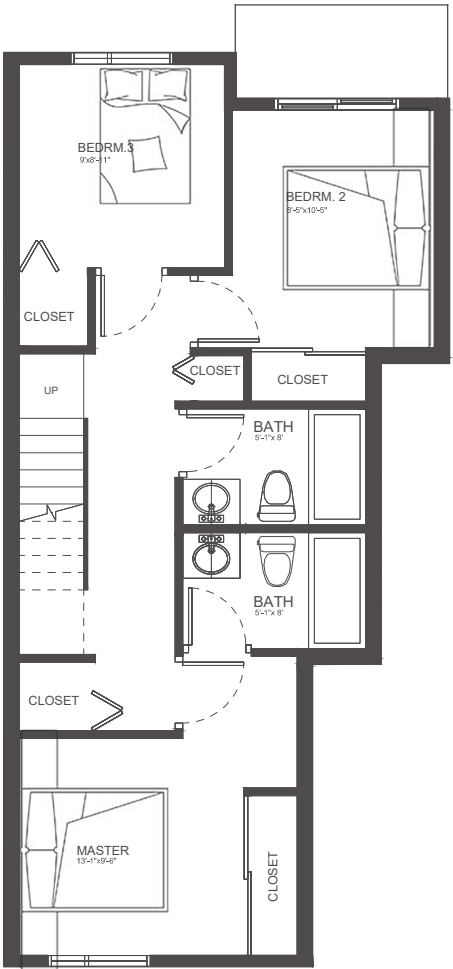
INTERIOR 1274 SQ FT  
ROOF DECK 340 SQ FT



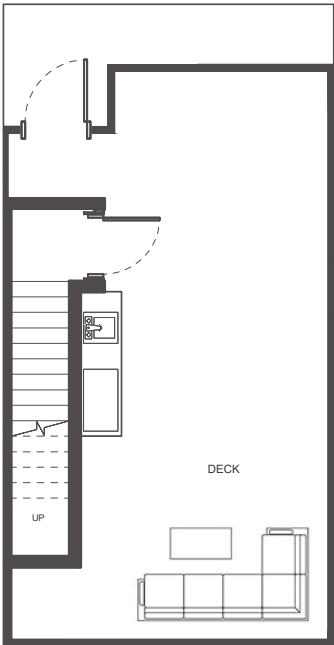
2ND FLOOR



MAIN FLOOR PLAN



UPPER FLOOR PLAN



ROOF / DECK

CEILING HEIGHT MAIN FLOOR: 9' - 2" UPPER FLOOR: 8' - 1"

The floorplan illustration is not suitable for construction/architectural purposes. Measurements are approximate and may not be to scale. The developer reserves the right to make changes to the information contained herein, including floor plans, sizes, layouts and interior and exterior finishes. Height restrictions for under stair storage. All maps, views, photography, digital renderings of architecture and interiors as produced by or on behalf of the developer are representational only and may not accurately reflect the final, finished development. E&OE. Floorplan by Figura Design Inc. | 778.960.6543 | info@figuradesign.ca